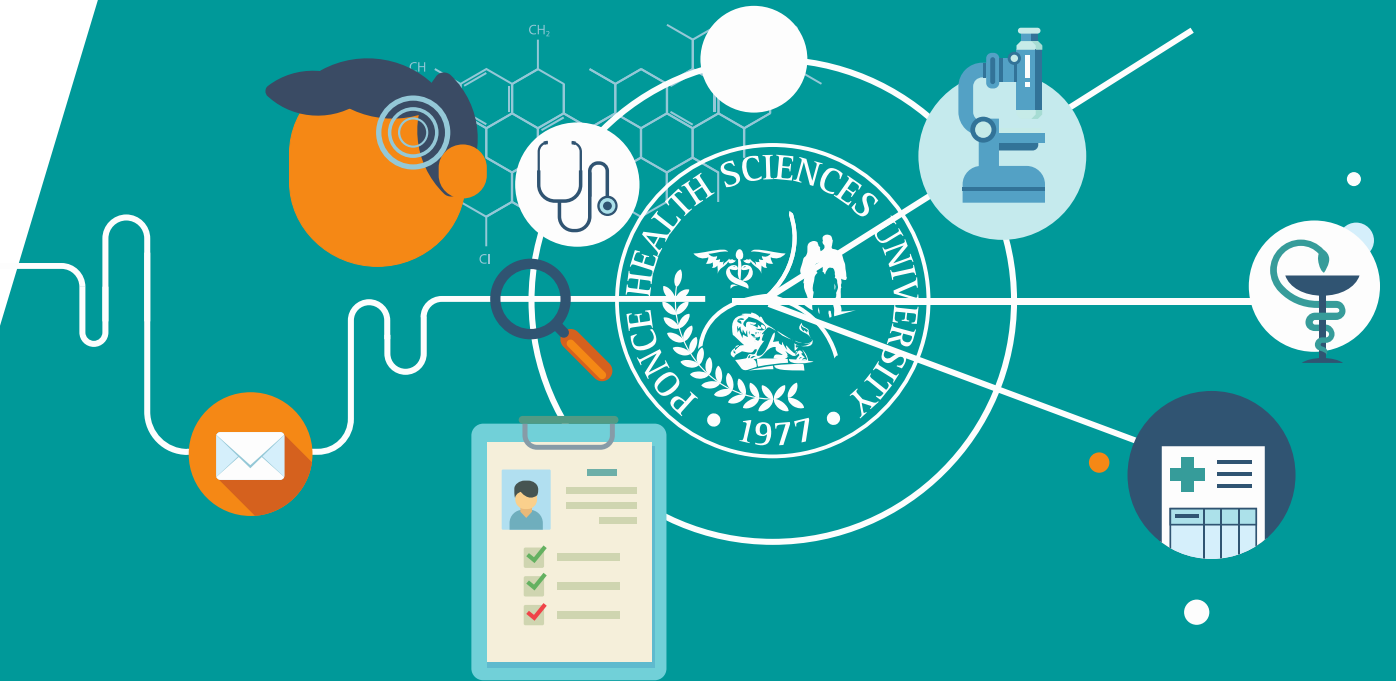


# Corporate Arrangements for hotel stays and transportation



Tamdiu Discendum Est. Quamdiu Vivas



DONDE TÚ HACES LA DIFERENCIA

# Content

We have corporate rates arrangements for Hotels stays, Car Rentals and for ground transportation. Here you will find the information needed to get the corporates rates. For none of those options we have an exclusivity agreement.

# Content

Please select the desired option to go to that page

---

Hotels rates	Ponce Hilton, Ponce PR	Aloft Hotel Ponce	Ponce Plaza, Ponce PR
Caribe Hotel, Ponce PR	Holiday Inn, Ponce PR	Fairfield Inn & Suites St Louis Downtown	Courtyard Saint Louis Downtown West
Drury Inn St. Louis at Union Station	Pear Tree Inn St. Louis Near Union Station	Ground Transportation in Puerto Rico	Car Rental Puerto Rico
Car Rental United States			

◆ PRICES PER NIGHT AND ROOM SPECIFICATION ◆

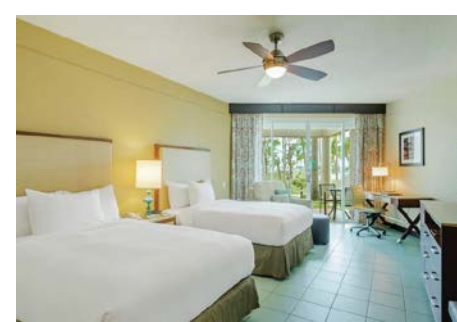
January 2022 - December 2022

<u>HOTEL</u>	<u>ROOM</u>	<u>PRICES PER NIGHT</u>	<u>FEES</u>	<u>BENEFITS</u>
<u>PONCE HILTON</u>	Room - Single or Double Standard	15% off best available rate at the moment of confirming reservation	14% Resort Fee / 11% Tax	Rate includes Full Breakfast Buffet at La Terraza Restaurant for two. Guests Parking Costs: \$10.00 Self parking and \$18.00 Valet parking.
	Room - Single or Double Deluxe at the Ocean Tower			
<u>CARIBE HOTEL</u>	Room - Single or Double	\$ 100.00	9% Tax	Rate includes Full Breakfast Buffet for two. Free access to parking, gym and Wi-Fi High Speed Internet.
<u>PONCE PLAZA HOTEL &amp; CASINO</u>	Room - Single	\$ 139.00	11% included on rate	Rate includes: - Stay on Corporate Floor (3rd floor)/ - Fridge and Microwave in the room/ - Free use of Business Center/ - Breakfast at Melao Coffe Shop from selected menu for 1 guest. / Free parking for 1 car. / - Rate valid from Sunday thru Thursday (weekends and holidays not includes).
	Room - Double	\$ 149.00	11% included on rate	
<u>Holiday Inn</u>	Room - Single or Double City View	\$ 139.95	11% included on rate	Rate includes Full Breakfast Buffet for two. Rate is valid for week days and weekends. Not valid for holidays.
	Room - Single or Double Pool View	\$ 149.95	11% included on rate	

◆ PRICES PER NIGHT AND ROOM SPECIFICATION ◆

January 2022 - December 2022

<u>HOTEL</u>	<u>ROOM</u>	<u>PRICES PER NIGHT</u>	<u>FEES</u>	<u>BENEFITS</u>
<u>Fairfield Inn &amp; Suites St Louis Downtown</u>	Room- Single or Double	\$139.00 (King and Queen- from 7/1/2022-10/31/2022) \$129.00 (King and Queen- from 11/1/2022-12/31/2022)	State and Resort Fees	Rates include breakfast and WiFi  <a href="https://www.marriott.com/event-reservations/reservation-link.mi?id=1660148129629&amp;key=CORP&amp;app=resvlink">https://www.marriott.com/event-reservations/reservation-link.mi?id=1660148129629&amp;key=CORP&amp;app=resvlink</a>
<u>Courtyard By Marriott Downtown West Saint Louis</u>	Room- Single or Double	\$109.00	State and Resort Fees	  <a href="https://www.marriott.com/event-reservations/reservation-link.mi?id=1655138981303&amp;key=CORP&amp;app=resvlink">https://www.marriott.com/event-reservations/reservation-link.mi?id=1655138981303&amp;key=CORP&amp;app=resvlink</a>
<u>Drury Inn St. Louis at Union Station</u>	Standard room with two beds, single occupancy, plus tax	\$114.00	State and Resort Fees	Rates include breakfast BizTrip Corporate ID # 333044
<u>Pear Tree Inn St. Louis Near Union Station</u>	Standard room with two beds, single occupancy, plus tax	\$93.00	State and Resort Fees	Rates include breakfast BizTrip Corporate ID # 333044



► **Rooms:**

- *Single or Double Standard*
- *Single or Double Deluxe at Ocean Tower*

► **Benefits:**

- Full Breakfast Buffet at La Terraza Restaurant for two
- Guest Parking: 10.00 (Self Parking) and \$18.00 (Valet Parking)
- 15 % Off best available rate at the moment of confirming reservation plus 14% Resort Fee and 11% Sales Tax





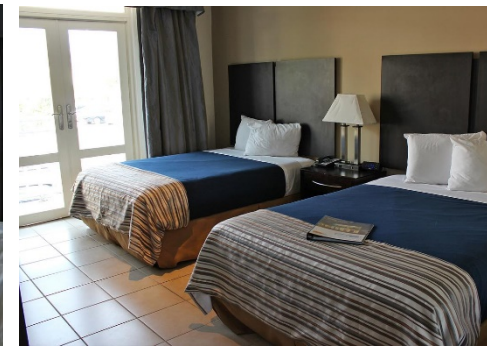


► **Rooms:**

- ***\$169 per night- between Sunday - Thursday***
- ***\$189 per night- between Friday - Saturday***

► **Benefits:**

- **Breakfast included**
- **Complimentary Transportation Shuttle from Hotel to PHSU**
- **Car Rental**

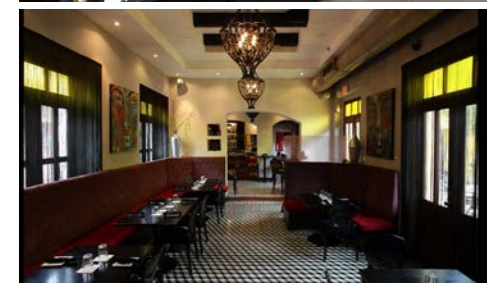


**• Rooms:**

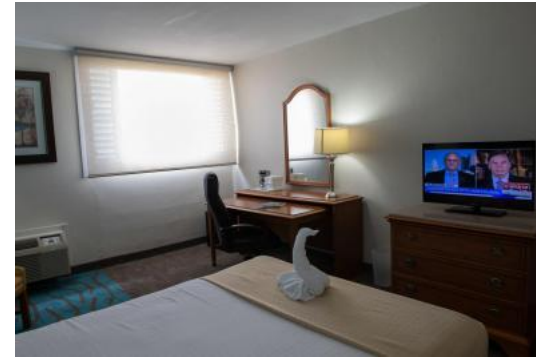
- Single – Room Rate \$139.00 (Sales Tax 11% already include)
- Double- Room Rate \$149.00 (Sales Tax 11% already include)

**• Benefits:**

- Stay on Corporate Floor (3<sup>rd</sup> Floor)
- Fridge and Microwave in room
- Free use of Business Center
- Full Breakfast Buffet at Melao Coffee Shop from selected menu for one guest
- Guest Parking: free parking access for 1 car
- Rate available for Sunday thru Thursday (weekends and holidays not includes)







- **Rooms:**
  - **Single or Double**
- **Benefits:**
  - **Full Breakfast Buffet for two**
  - **Free access to Parking, Gym and Wi-Fi High Speed Internet**
  - **Room rate: \$100.00 plus 9% Sales Tax**







- **Rooms:**
  - **Single or Double**
- **Benefits:**
  - **Full Breakfast Buffet for two**
  - **Rate valid for weekdays and weekends. Not valid for holidays.**
  - **Room rate: \$149.95 (Sales Tax 11% already include on rate)**



# Fairfield Inn & Suites St. Louis Downtown

2144 Market Street St Louis, Missouri 63103 +1 314-499-0100

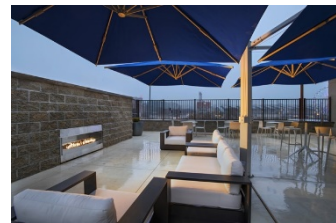
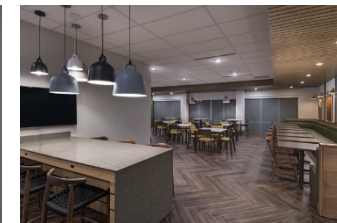
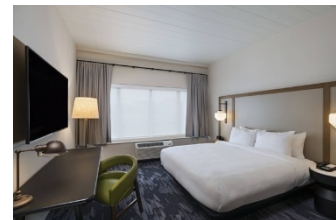
- **Rooms:**

- \$139.00 (King and Queen- from 7/1/2022-10/31/2022)
- \$129.00 (King and Queen- from 11/1/2022-12/31/2022)

- **Benefits:**

- Breakfast
- WiFi

✓ <https://www.marriott.com/event-reservations/reservation-link.mi?id=1660148129629&key=CORP&app=resvlink>

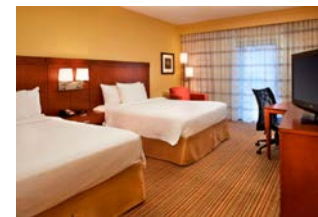




## Courtyard St Louis Downtown West

2340 Market Street at Jefferson St. Louis, Missouri 63103

- Rooms:
  - Double
  - King
- Benefits:
  - Room Rate: \$119.00 plus tax
    - For special rates, please use the following link:
      - ✓ <https://www.marriott.com/event-reservations/reservation-link.mi?id=1655138981303&key=CORP&app=resvlink>







## Drury Inn St. Louis at Union Station

201 South 20th Street  
St. Louis, MO 63103

P: 314-231-3900  
F: 314-241-1160



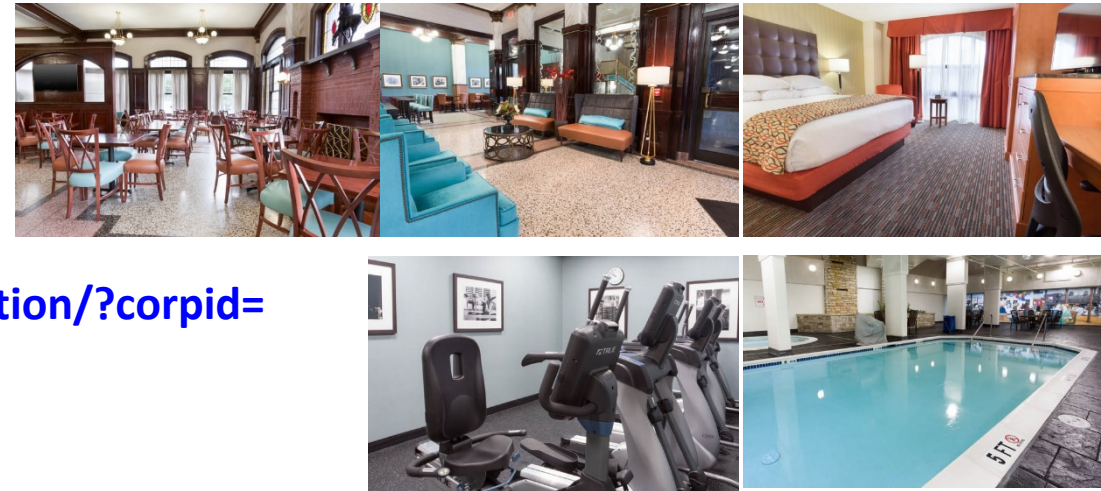
- **Rooms:**

- Standard room with two beds, single occupancy \$114.00, plus tax

- **Benefits:**

- Breakfast
- BizTrip Corporate ID # 333044

✓ <https://www.druryhotels.com/bookandstay/newreservation/?corpid=333044>





## Pear Tree Inn St. Louis Near Union Station

2211 Market Street  
St. Louis, MO 63103

P: 314-241-3200  
F: 314-659-4905

- **Rooms:**

- Standard room with two beds,  
single occupancy \$93.00, plus tax

- **Benefits:**

- Breakfast
- BizTrip Corporate ID # 333044

✓ <https://www.druryhotels.com/bookandstay/newreservation/?corpid=333044>







## Business Rental Program Summary

### Ponce Health Sciences University

Vehicle Class*	Daily Rate	National Brand One-Way Daily Rate
Compact	\$50.00	\$90.00
Midsize	\$50.00	\$90.00
Standard	\$51.00	\$90.00
Full Size	\$54.00	\$90.00
Premium	\$64.00	\$64.00
Premium Special	\$67.00	\$67.00
Luxury	\$74.00	\$74.00
Minivan	\$89.00	\$89.00
Compact/Midsize/Standard SUV	\$89.00	\$89.00
Large SUV	\$117.00	\$117.00
½ Ton Full Size Truck/Cargo Van	\$86.00	N/A
Hybrid Standard	\$54.00	N/A
Hybrid Full Size 4 door	\$57.00	N/A
Hybrid SUV	\$80.00	N/A



# Car Rentals in Puerto Rico

To rent a car you should make the selection for rental and submit a requisition; Purchasing Department will make the reservation.

If you need to set up a rental to pay with your credit card you should the following steps:

- Go to [www.enterprise.com](http://www.enterprise.com)
- Enter the location, date and time and your **Account# XZP167W** for the rental and click "Continue" to search for available vehicles.
- Choose the car class that's preferred. The next screen will be the Extra's screen, click on "Continue to review" button.
- On the next screen, put in the renter's name, phone and email address.
- Underneath that, it will ask you to confirm if this is a **business rental**, click **"NO"**. It will then ask you if you are authorized and choosing to bill your company for this rental. Click **"NO"**.
- Enter your **Credit Card** and click on "continue".
- On the next screen, click on "Reserve Now" to complete the reservation.



PUERTO RICO

# Car Rentals in United States

To rent a car you should make the selection for rental and submit a requisition; Purchasing Department will make the reservation.

If you need to set up a rental to pay with your credit card you should the following steps:

- Go to [www.nationalcar.com](http://www.nationalcar.com)
- Screen: Enter location, dates, and account number (**XZP167W**).
  - ✓ Select “Go” – this will prompt you to join Emerald Club. Select “Continue as a guest”
- Screen: Choose Vehicle - select the vehicle type
- Screen: Optional items: review optional products (then click “continue”) or click “no thanks, Skip to Review”
- Screen: Review & Reserve:
  - ✓ Rates, Taxes and Fees – details the estimated cost of the rental
  - ✓ Driver Information – enter in your renter’s name and email address
  - ✓ Payment Information – **Credit Card**
  - ✓ To complete the reservation, select “Reserve”



United States

# Ground transportation in Puerto Rico with driver



**JX TRANSPORT**

Satisfacción  
Responsabilidad  
Economía

**Servicios de Transportación**

**Viajes a toda la isla**

**AEROPUERTO | EXCURSIONES**

**CHINCHORREO**

**PASADIA FAMILIAR**

**787.316.9624**

**1 to 10 persons  
\$150 per way  
(From Ponce to San Juan  
or San Juan to Ponce)**

**Email:  
jxtransport@hotmail.com**



The purchasing department will be available to help you with your arrangements for hotel stay's, car rentals and ground transportation.

Please feel free to contact us at: 787-840-2575  
extensions: 5643, 5644, 5648 and 5649