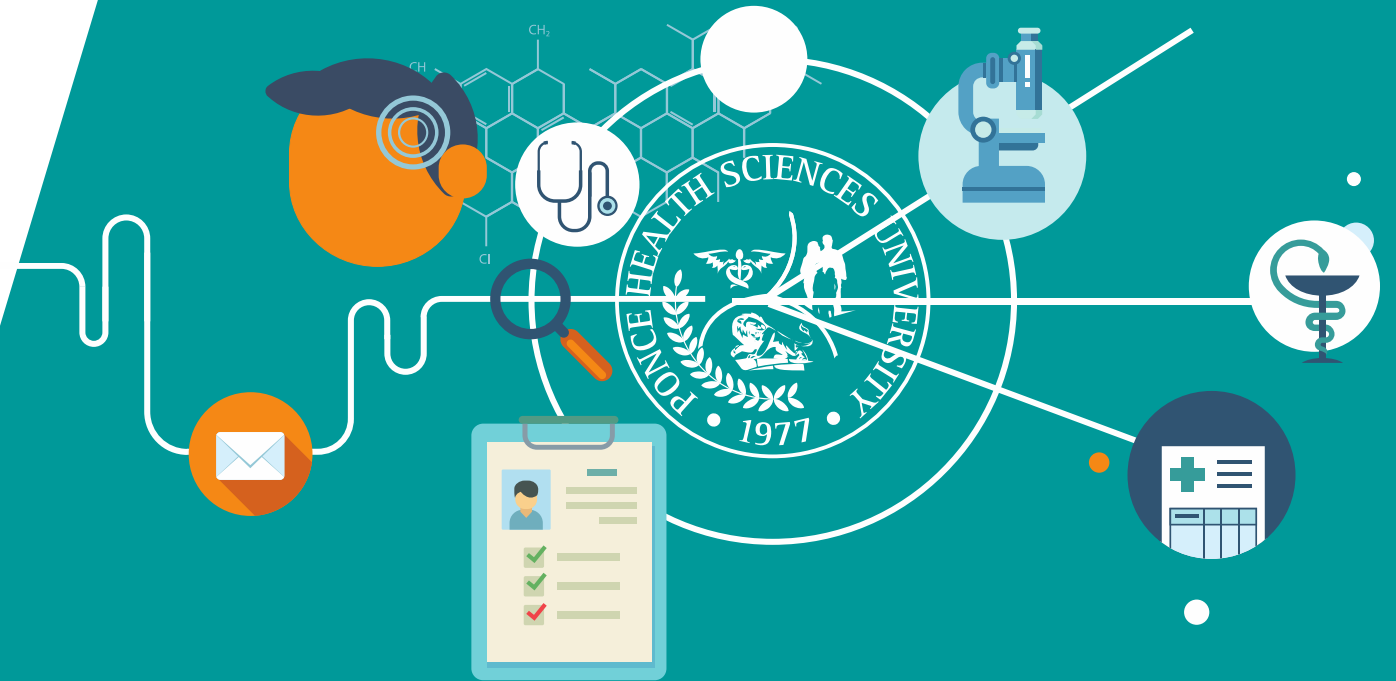


Corporate Arrangements for hotel stays and transportation



Tamdiu Discendum Est. Quamdiu Vivas



DONDE TÚ HACES LA DIFERENCIA

Content

We have corporate rates arrangements for Hotels stays, Car Rentals and for ground transportation.

Here you will find the information needed to get the corporates rates. For none of those options we have an exclusivity agreement.

Content

Please select the desired option to go to that page



Hotels rates	Ponce Hilton, Ponce PR	Ponce Plaza, Ponce PR	Aloft Hotel, Ponce PR
Condado Vanderbilt, San Juan PR	Fairfield Inn and Suites Saint Louis Downtown	Courtyard Saint Louis Downtown West	Drury Inn St. Louis at Union Station
Pear Tree Inn St. Louis Near Union Station	Popular Auto Car Rental (Puerto Rico Only)	Enterprise Car Rental Puerto Rico	National Car Rental United States
Ground Transportation in Puerto Rico			

◆ PRICES PER NIGHT AND ROOM SPECIFICATION ◆

January 2024 - December 2024

<u>HOTEL</u>	<u>ROOM</u>	<u>PRICES PER NIGHT</u>	<u>FEES</u>	<u>BENEFITS</u>
<u>PONCE HILTON</u>	Room - Single or Double Standard	25% off best available rate at the moment of confirming reservation	14% Resort Fee / 11% Tax	Rate includes Full Breakfast Buffet at La Terraza Restaurant for two. Guests Parking Costs: \$10.00 Self parking and \$18.00 Valet parking.
	Room - Single or Double Deluxe at the Ocean Tower			
<u>PONCE PLAZA HOTEL & CASINO</u>	Room - Single	\$139.00 (Sunday to Thursday) \$149.00 (Friday and Saturday)	11% included on rate	Rate includes: - Complimentary breakfast at Melao Coffee Shop. (1 voucher in King Room, 2 vouchers in Double Room) - Complimentary self-parking access for one (1) car (\$11.15 additional car per night). - Complimentary two (2) bottles of water in room (\$2.00 each additional bottle). - Supply of two (2) packet of coffee and condiments per stay. (\$2.00 each additional set). Free Wireless High Speed Internet access and local calls. Taxes and Fees includes.
	Room - Double	\$149.00 (Sunday to Thursday) \$159.00 (Friday and Saturday)	11% included on rate	
<u>ALOFT PONCE</u>	Room - Single or Double Sunday through Thursday	\$ 169.00	11% included on rate	Rate includes One Daily Breakfast , Early Check-In Not valid for holidays.
	Room - Single or Double Fridays and Saturdays	\$ 189.00	11% included on rate	
<u>CONDADO VANDERBILT – SAN JUAN</u>	Room- Single or Double	15% off best available rate as promote on the hotel website with all corporate amenities included	11% government tax and 20% hotel fee	<ul style="list-style-type: none"> • Complimentary Internet Access • Complimentary Local Calls within the San Juan Metropolitan Area and 800#'s calls <ul style="list-style-type: none"> • Access to our 24-hour Business Center • Complimentary use of our Ocean Front Fitness Center (second floor of The Spa) • Full American Breakfast from 7:00 am through 9:30 am (Monday through Friday). Served at Ola Ocean Front Bistro. The complimentary breakfast inclusion in PONCE HEALTH SCIENCES UNIVERSITY corporate rate is only available to one guest per room reserved. • Exclusive access to the Executive Business Lounge* with the following amenities: complimentary use of the Business Lounge Private Room for up to 2-hour meetings (max. 8 guests), based on availability.

◆ PRICES PER NIGHT AND ROOM SPECIFICATION ◆

January 2024 - December 2024

<u>HOTEL</u>	<u>ROOM</u>	<u>PRICES PER NIGHT</u>	<u>FEES</u>	<u>BENEFITS</u>
<u>Fairfield Inn & Suites St Louis Downtown</u>	Room- Single or Double	\$139.00 (King and Queen)	State and Resort Fees	Rates include continental breakfast and WiFi https://www.marriott.com/event-reservations/reservation-link.mi?id=1660148129629&key=CORP&app=resvlink
<u>Courtyard By Marriott Downtown West Saint Louis</u>	Room- Single or Double	\$139.00 Rate includes complimentary parking and breakfast for one	State and Resort Fees	https://www.marriott.com/event-reservations/reservation-link.mi?id=1655138981303&key=CORP&app=resvlink
<u>Drury Inn St. Louis at Union Station</u>	Standard room with two beds, single occupancy, plus tax	\$129.99	State and Resort Fees	Rates include continental breakfast
<u>Pear Tree Inn St. Louis Near Union Station</u>	Standard room with two beds, single occupancy, plus tax	\$117.99	State and Resort Fees	Rates include continental breakfast



Hilton

PONCE
GOLF & CASINO RESORT



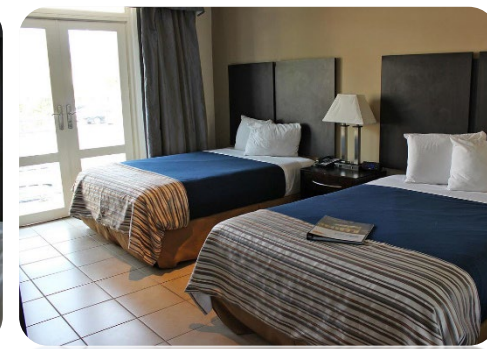
► **Rooms:**

- Single or Double Standard
- Single or Double Deluxe at Ocean Tower

► **Benefits:**

- Full Breakfast Buffet at La Terraza Restaurant for two
- Guest Parking: 10.00 (Self Parking) and \$18.00 (Valet Parking)
- 25 % Off best available rate at the moment of confirming reservation plus 14% Resort Fee and 11% Sales Tax





• **Rooms:**

- **Single – Room Rate \$139.00 (Sales Tax 11% already include)**
- **Double- Room Rate \$149.00 (Sales Tax 11% already include)**

• **Benefits:**

- **Stay on Corporate Floor (3rd Floor)**
- **Fridge and Microwave in room**
- **Free use of Business Center**
- **Full Breakfast Buffet at Melao Coffee Shop from selected menu for one guest**
- **Guest Parking: free parking access for 1 car**
- **Rate available for Sunday thru Thursday (weekends and holidays not included)**



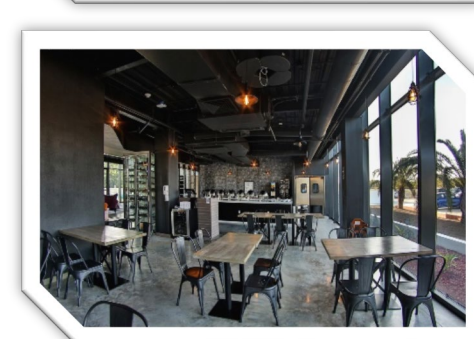
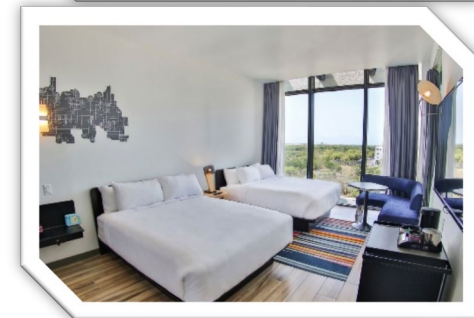
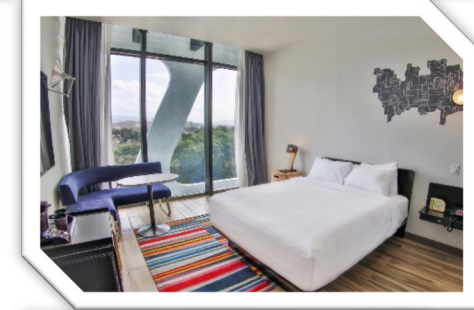


► **Rooms:**

- *\$169 per night- between Sunday - Thursday*
- *\$189 per night- between Friday - Saturday*

► **Benefits:**

- Breakfast included
- Early Check-In (Not valid for holidays)
- Complimentary Transportation Shuttle from Hotel to PHSU
- Car Rental





CONDADO VANDERBILT HOTEL



► **Rooms:**

- 15% off best available rate as promote on the hotel website with all corporate amenities included

► **Benefits:**

- Complimentary Internet Access
- Complimentary Local Calls within the San Juan Metropolitan Area and 800#'s calls
- Access to our 24-hour Business Center
- Complimentary use of our Ocean Front Fitness Center (second floor of The Spa)
- Full American Breakfast from 7:00 am through 9:30 am (Monday through Friday).
 - Served at Ola Ocean Front Bistro. The complimentary breakfast inclusion in PONCE HEALTH SCIENCES UNIVERSITY corporate rate is only available to one guest per room reserved.
- Exclusive access to the Executive Business Lounge* with the following amenities:
 - complimentary use of the Business Lounge Private Room for up to 2-hour meetings (max. 8 guests), based on availability.

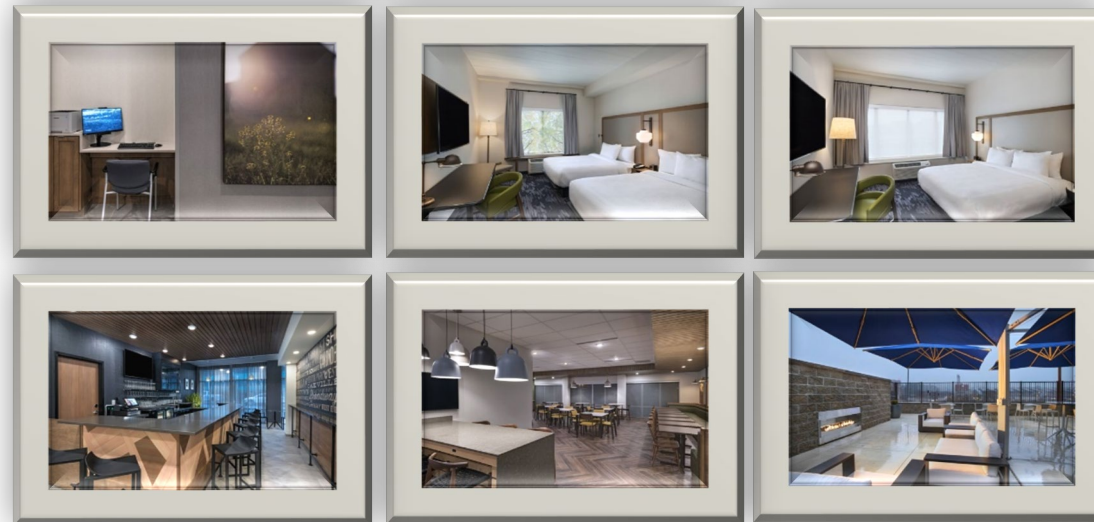


Fairfield Inn & Suites St. Louis Downtown

2144 Market Street St Louis, Missouri 63103 +1 314-499-0100

- **Rooms:**
 - **\$139.00 King and Queen**
- **Benefits:**
 - **Continental Breakfast**
 - **WiFi**

✓ <https://www.marriott.com/event-reservations/reservation-link.mi?id=1660148129629&key=CORP&app=resvlink>

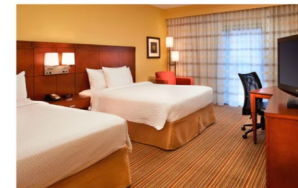
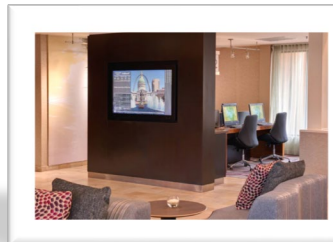


Courtyard St Louis Downtown West

2340 Market Street at Jefferson St. Louis, Missouri 63103

- **Rooms:**
 - Double
 - King
- **Benefits:**
 - Room Rate: \$139.00 plus tax
 - Includes complimentary parking and breakfast for one
 - For special rates, please use the following link:

✓ <https://www.marriott.com/event-reservations/reservation-link.mi?id=1655138981303&key=CORP&app=resvlink>





Drury Inn St. Louis at Union Station

201 South 20th Street
St. Louis, MO 63103

P: 314-231-3900
F: 314-241-1160

- **Rooms:**
 - Standard room with two beds, single occupancy \$129.99, plus tax
- **Benefits:**
 - Continental Breakfast

Price may change during the year





Pear Tree Inn St. Louis Near Union Station

2211 Market Street
St. Louis, MO 63103

P: 314-241-3200
F: 314-659-4905

- **Rooms:**
 - Standard room with two beds, single occupancy \$117.99, plus tax
- **Benefits:**
 - Continental Breakfast

Price may change during the year



Rates applicable to Rentals in Puerto Rico and United States



<u>Puerto Rico</u>	
Vehicle Class	<u>Daily Rates</u>
Economy	\$49.00
Compact	\$49.00
Intermediate	\$49.00
Standard	\$50.00
Full Size	\$53.00
Premium	\$63.00
Premium Special	\$66.00
Luxury	\$73.00
Minivan	\$88.00
Midsize/Standard SUV	\$88.00
Large Sport Utility	\$116.00
½ ton Truck/Cargo Van	\$85.00
Hybrid Standard	\$53.00
Hybrid Full Size 4 door	\$56.00
Hybrid Sport Utility	\$79.00

Benefits applicable to Rentals in Puerto Rico and United States



- **Damage Waiver** (Included with reservation)

Enterprise waives or reduces the renter's responsibility for loss of, or damage to, the rental vehicle (including but not limited to towing, storage, loss of use, administrative fees and/or diminishment of value) subject to the terms and conditions of the rental agreement and applicable laws.

- **Unlimited Mileage**

- **9 additional drivers**

- **Free cancellation anytime**

- **Pay at pick up**

Car Rentals in Puerto Rico

To rent a car you should make the selection for rental and submit a requisition; Purchasing Department will make the reservation.

If you need to set up a rental to pay with your credit card you should the following steps:

- Go to www.enterprise.com
- Enter the location, date and time and your **Account# XZP167W** for the rental and click "Continue" to search for available vehicles.
- Choose the car class that's preferred. The next screen will be the Extra's screen, click on "Continue to review" button.
- On the next screen, put in the renter's name, phone and email address.
- Underneath that, it will ask you to confirm if this is a **business rental**, click **"NO"**. It will then ask you if you are authorized and choosing to bill your company for this rental. Click **"NO"**.
- Enter your **Credit Card** and click on "continue".
- On the next screen, click on "Reserve Now" to complete the reservation.



PUERTO RICO

Car Rentals in United States

To rent a car you should make the selection for rental and submit a requisition; Purchasing Department will make the reservation.

If you need to set up a rental to pay with your credit card you should the following steps:

- Go to www.nationalcar.com
- Screen: Enter location, dates, and account number (**XZP167W**).
 - ✓ Select “Go” – this will prompt you to join Emerald Club. Select “Continue as a guest”
- Screen: Choose Vehicle - select the vehicle type
- Screen: Optional items: review optional products (then click “continue”) or click “no thanks, Skip to Review”
- Screen: Review & Reserve:
 - ✓ Rates, Taxes and Fees – details the estimated cost of the rental
 - ✓ Driver Information – enter in your renter’s name and email address
 - ✓ Payment Information – **Credit Card**
 - ✓ To complete the reservation, select “Reserve”



United States

Rates applicable to Rentals in Puerto Rico

Type	Price/Daily Less 20%	Insurance P/ day	E Pass + toll	Total
Compact Car 2/4 Door	\$40.95	\$23.95	\$4.95	\$69.85
Compact SUV	\$65.95	\$23.95	\$4.95	\$94.85
Fullsize	\$62.95	\$23.95	\$4.95	\$91.85
Cargo Van 250	\$65.95 + \$0.35 per miles	\$26.00	\$4.95	\$96.90
Extended Cargo Van	\$67.95 + \$0.35 per miles	\$26.00	\$4.95	\$98.90
Fullsize SUV	\$99.95	\$23.95	\$4.95	\$128.85
Passenger Minivan	\$99.95	\$23.95	\$4.95	\$128.85
Clubwagon (15 passsenger)	\$195.95	\$23.95	\$4.95	\$224.85
Trucks	\$99.95 + \$ 0.45 per miles	\$26.00	\$4.95	\$130.90



POPULAR AUTO®

Benefits applicable to Rentals in Puerto Rico:

- Highway Toll Fee:
* \$4.95
- Collision Damage Waiver/
Liability Waiver-
from \$23.95
- Free tow truck service 24/7
throughout the island



Ground transportation in Puerto Rico with driver



JX TRANSPORT

Satisfacción
Responsabilidad
Economía

Servicios de Transportación

Viajes a toda la isla

AEROPUERTO | EXCURSIONES
CHINCHORREO
PASADIA FAMILIAR

787.316.9624

**1 to 10 persons
\$150 per way
(From Ponce to San Juan
or San Juan to Ponce)**

**Email:
jxtransport@hotmail.com**

The Purchasing Department will be available to help you with your arrangements for hotel stay's, car rentals and ground transportation.

Please feel free to contact us at: 787-840-2575
extensions: 5643, 5644, 5648 and 5649